



LAMBDA CHI ALPHA



A huge part of the college experience is what happens away from the classroom—for many it is the first time they will live on their own, sometimes far from home. For others it is about meeting people, making connections, and building a network of colleagues to help foster their careers. But for those seeking even deeper relationships—truly dependable friends who will support and walk alongside them throughout life—they desire the bond of brotherhood that a fraternity provides.

For too long, the Zeta Iota chapter of Lambda Chi Alpha has relied on off-campus residences to house its members. While having a Chapter House for living, studying and activities is not a requirement for Greek life, it's much easier to recruit, educate and socialize. Now, there is a tremendous opportunity to not only build a stronger brotherhood, but an opportunity to leave a legacy at the University of Kansas for generations to come—by building a new Lambda Chi chapter house on campus.

We have the momentum to make this happen.

Since the early 2000's there has been a lot of excitement and buzz around building a new chapter house for Lambda Chi. Early efforts were hampered by the House Corporation debt on the property. Fortunately, the House Corporation Board—which owns the land—is now debt-free and we have more than \$1.25 million in gifts and pledges for this project.

LAMBDA CHI ALPHA

The Design

BRP Architects, a professional architectural firm in Springfield, Missouri, has created the plans for the new Lambda Chi Chapter House at the University of Kansas. The new house at 1510 Sigma Nu Place will be truly iconic, with a timeless design that makes a statement as visitors come up the hill. With 23,000 sq. ft. over three floors, it will accommodate over 40 live-in brothers and have plenty of common, study and recreation areas for all actives, including those not living in the house.



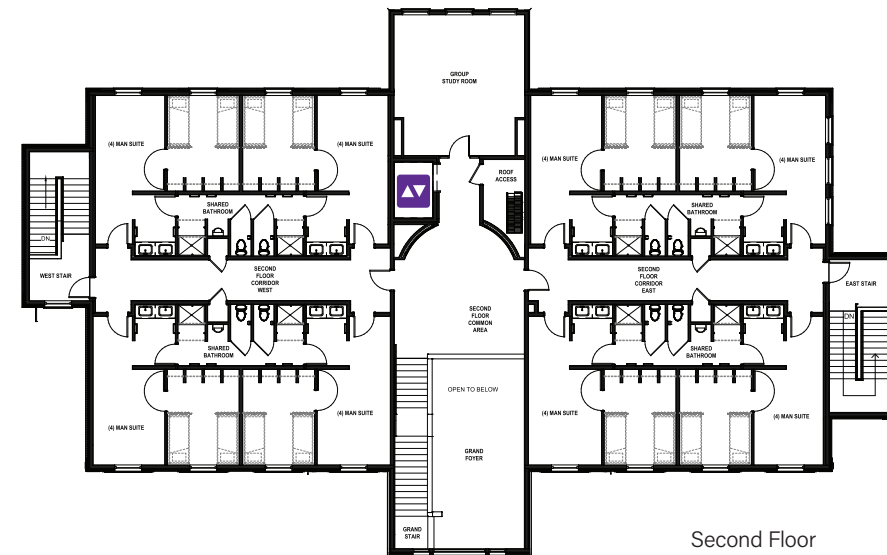
The site plan at 1510 Sigma Nu Place has parking for 56 vehicles, as well as basketball and sand volleyball courts.



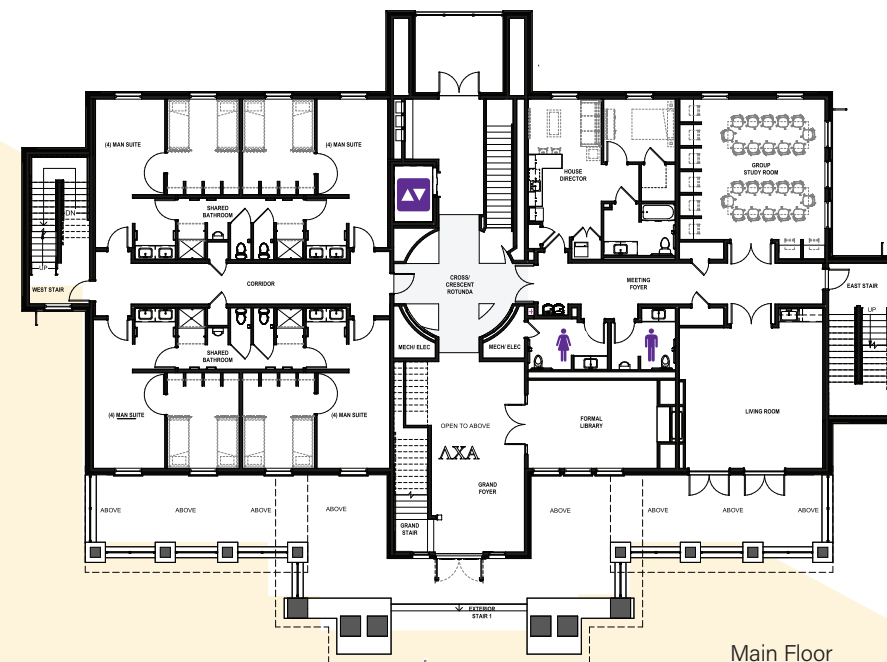
Front Elevation



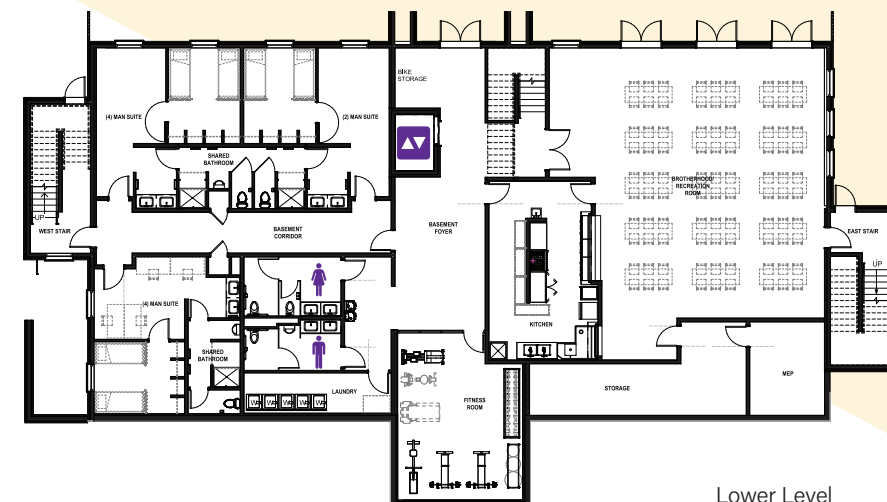
Back Elevation



Second Floor



Main Floor



Lower Level

Space to learn, space to grow

Approximately 40% of the new house is dedicated to educational purposes, allowing for the use of tax-deductible donations to the Educational Foundation. Current plans also allow for a future expansion to accommodate an additional 32 live-in members.

Living Areas

One (1) House Mother/Father Suite
One (1) 2-man suites,
Fourteen (14) 4-man suites,
Each with individual sleeping room(s)
and bathroom

Study Areas

One (1) Library
Two (2) Study Rooms

Amenities

Covered Porch
Outdoor patio with fire pit
Basketball court
Sand Volleyball court
Laundry Room
Fitness Room
Recreation Room
Elevator



Interested in building a legacy for the Fraternity at the University of Kansas?
Visit www.KansasLambdaChiAlpha.org to donate on-line, or email zetaiotafoundation@gmail.com.

To break ground on the new house by Fall of 2025 and open for members by the Fall of 2027, the House Corporation Board and Educational Foundation are asking for approximately \$2 Million more in support before banks will lend the rest of construction costs. Once complete, housing fees from live-ins and active dues will be able to sustain and pay off the mortgage. Any amount of support will help us break ground on the new Chapter House.

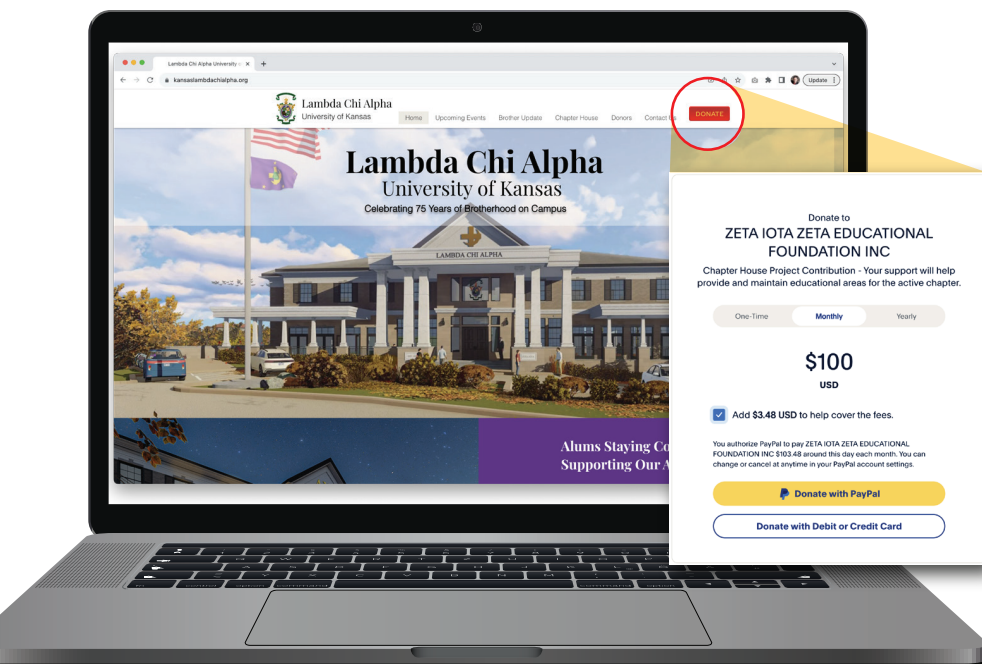
Leave a legacy with a tax-deductible contribution.

Tax-deductible donations to the Educational Foundation* may be made on-line or by check. All contributions—regardless of size—will receive recognition in the new house. Larger contributions will receive the option of naming individual living suites, specific common areas, or the entire house (on a first-come, first-serve basis).

Smaller contributions are welcome.

Not everyone can write a large check—and building a new Chapter house will require more than a few large donors. Brothers may pool their resources to fund a suite or room within the new house, and anyone who donates \$10,000 or more will receive their name on a permanent plaque within the foyer or rotunda. Donate \$1,000 and your name and ZI number will be etched into one of the brick pavers used in the new rear entrance to the house.

To make a contribution or for more information on recognition levels and naming opportunities, please contact [Chris Costello \(ZI 779\)](#) at [\(913\) 558-8688](#) or chriskcos@yahoo.com.



Did you know?

In addition to cash or check donations, appreciated assets such as stocks and bonds, as well as forced distributions from retirement plan assets are all tax-deductible if donated for educational purposes**

Many brothers have benefited from the lifelong lessons learned and friendships developed while an active at Lambda Chi. *This is our opportunity to pay it forward for future generations.*

- * The Educational Foundation is a 501(c)(3) that can accept cash or appreciated assets.
- ** Legal has determined that approximately 40% of the house will be for educational purposes, qualifying for funding with tax-deductible contributions via the Educational Foundation.